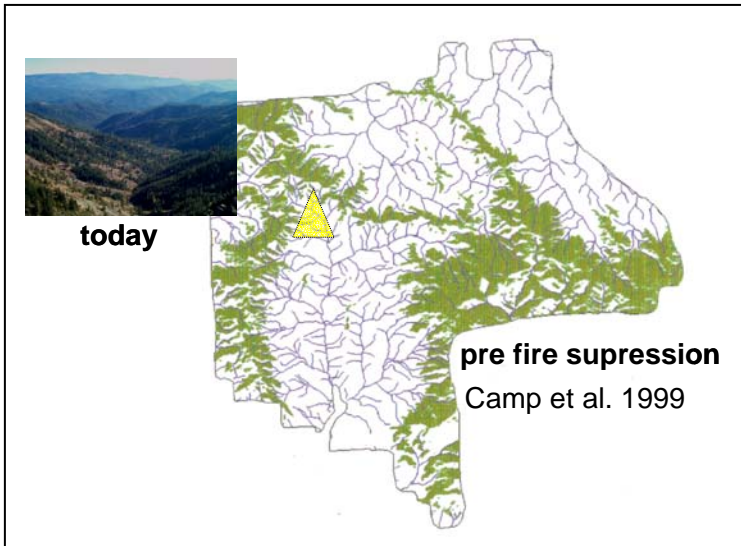
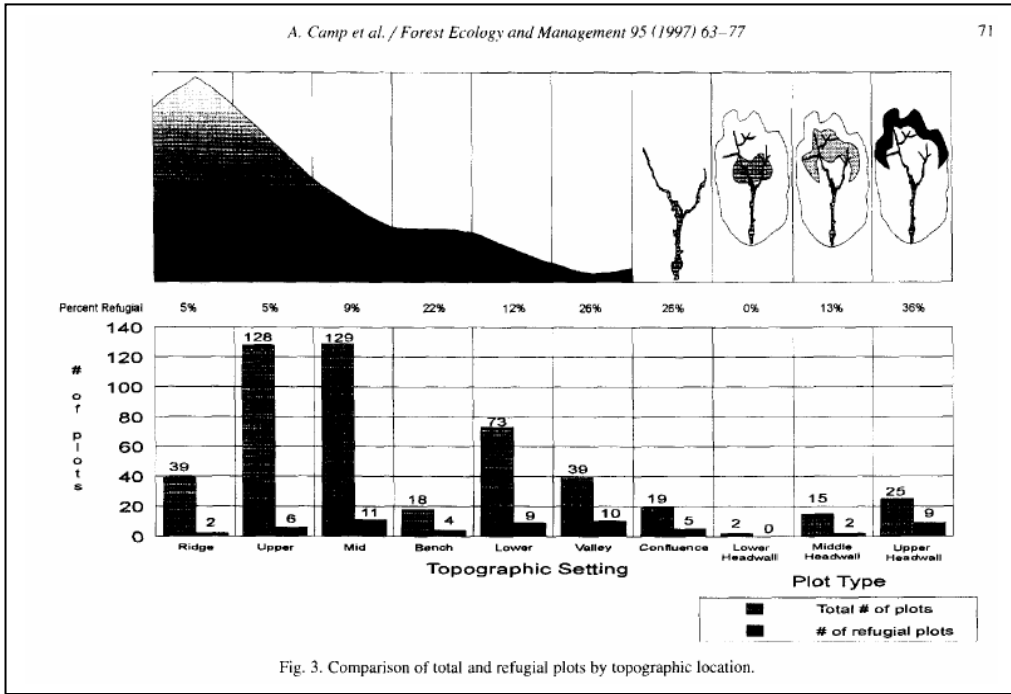


Wenatchee Field Trip
 Figures for Discussion

Predicting late-successional fire refugia pre-dating European settlement in the Wenatchee Mountains

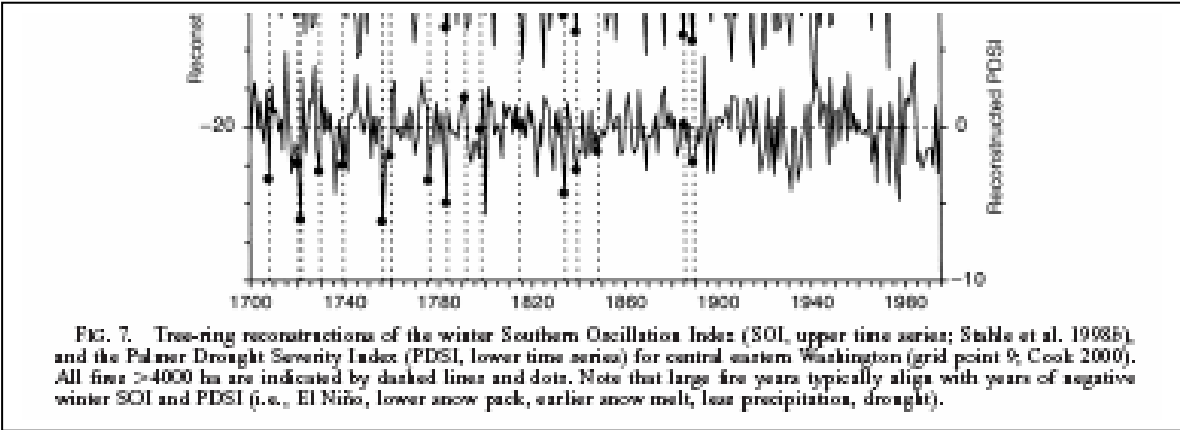
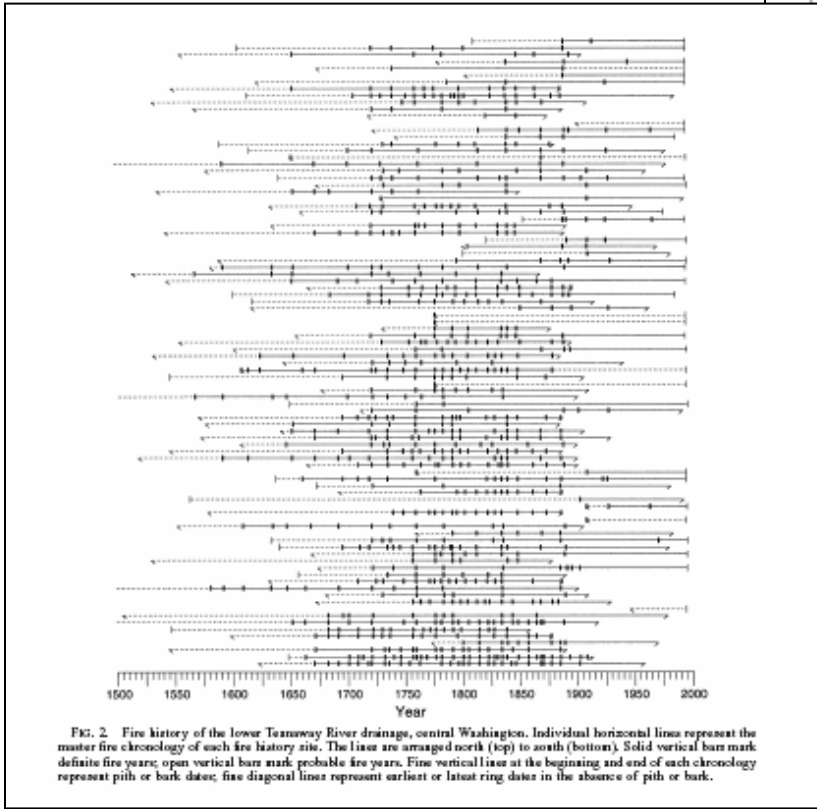
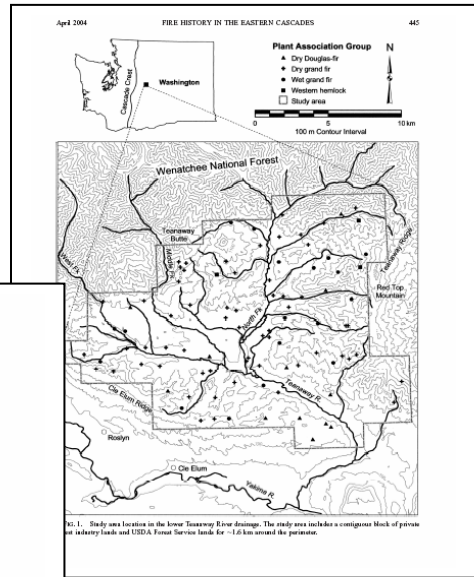
Ann Camp ^{a,*}, Chad Oliver ^b, Paul Hessburg ^a, Richard Everett ^a

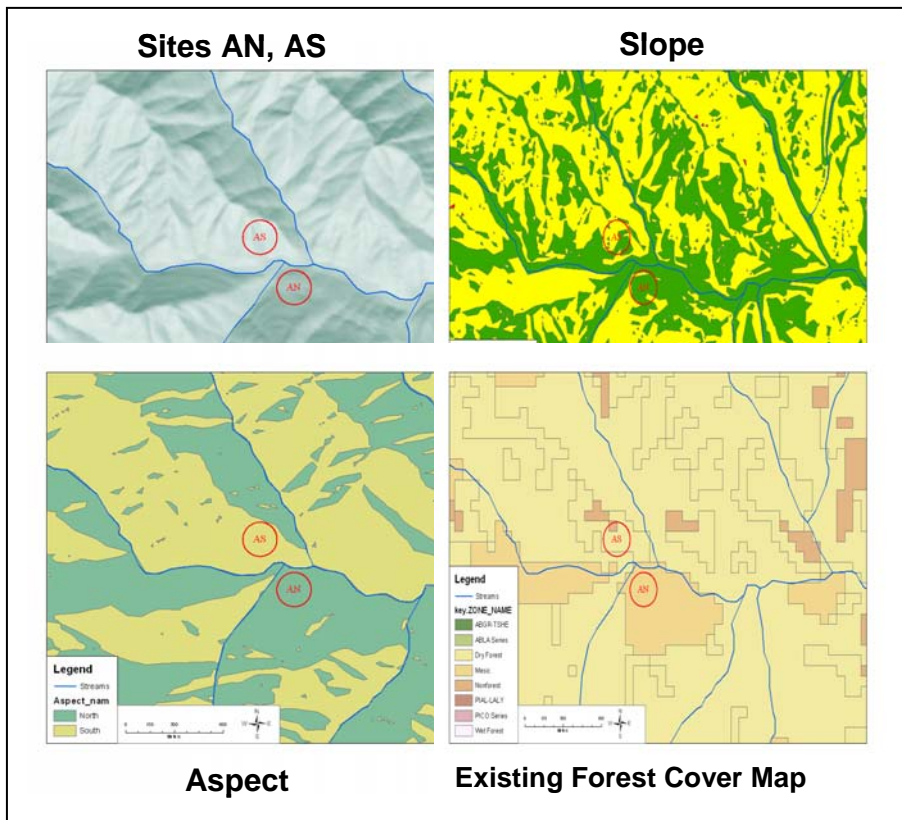
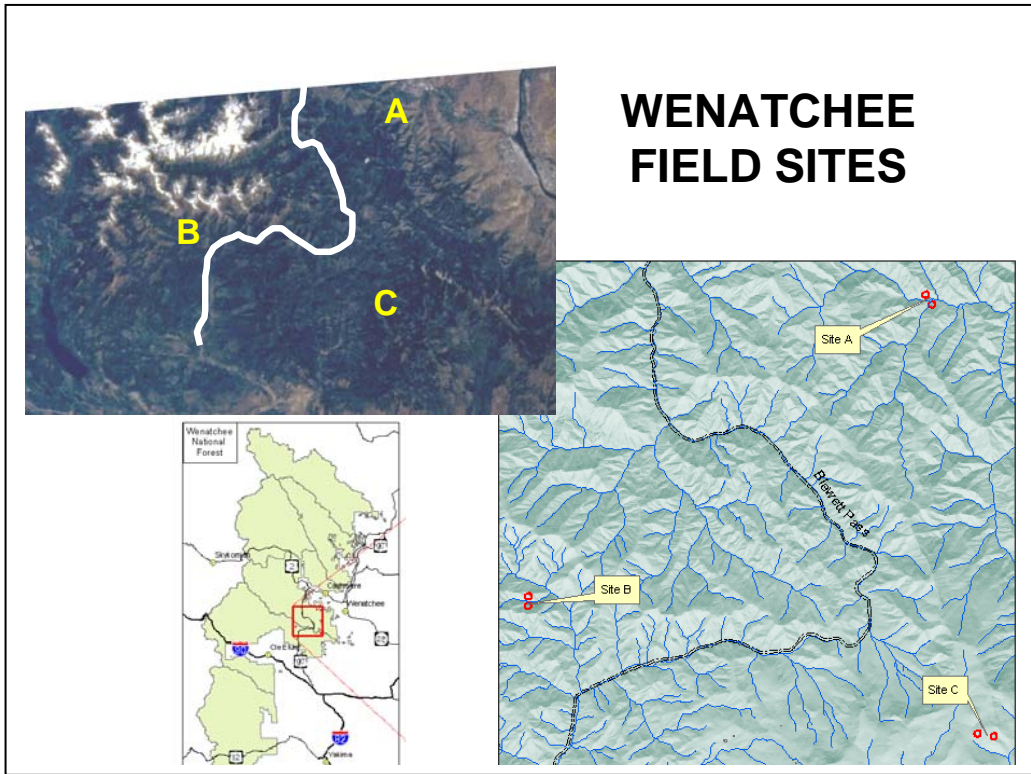


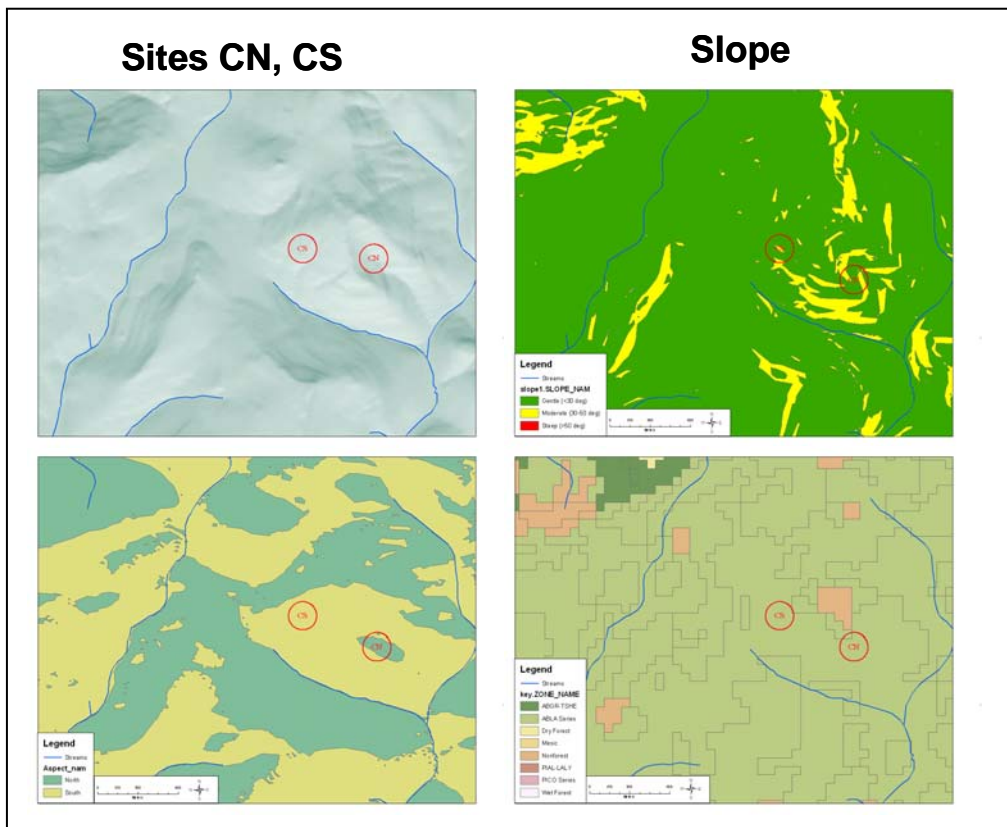
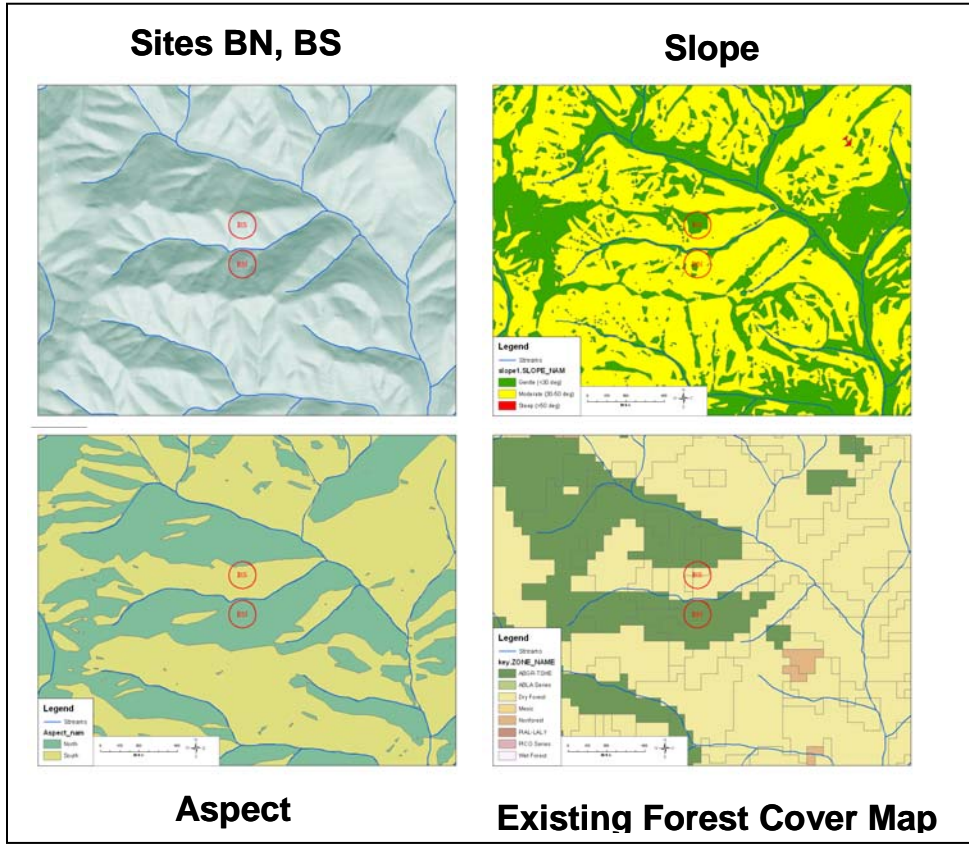
FIRE AND VEGETATION HISTORY IN THE EASTERN CASCADE MOUNTAINS, WASHINGTON

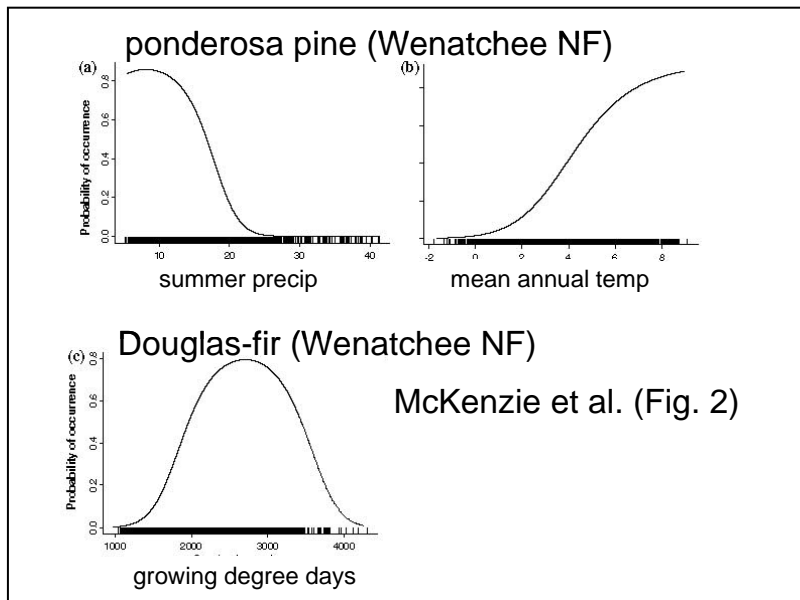
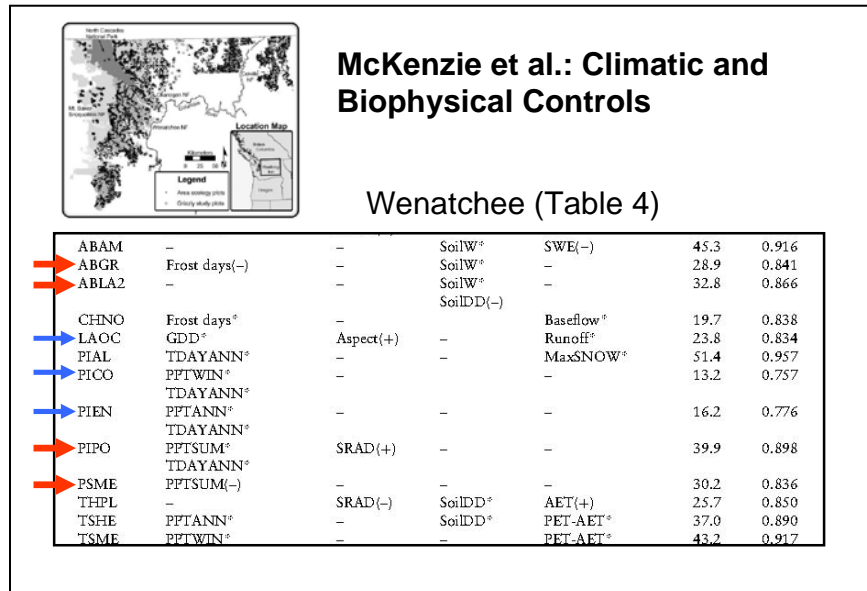
CLINTON S. WRIGHT¹ AND JAMES K. AGEE

¹College of Forest Resources, Box 352100, University of Washington, Seattle, Washington 98195-2100 USA









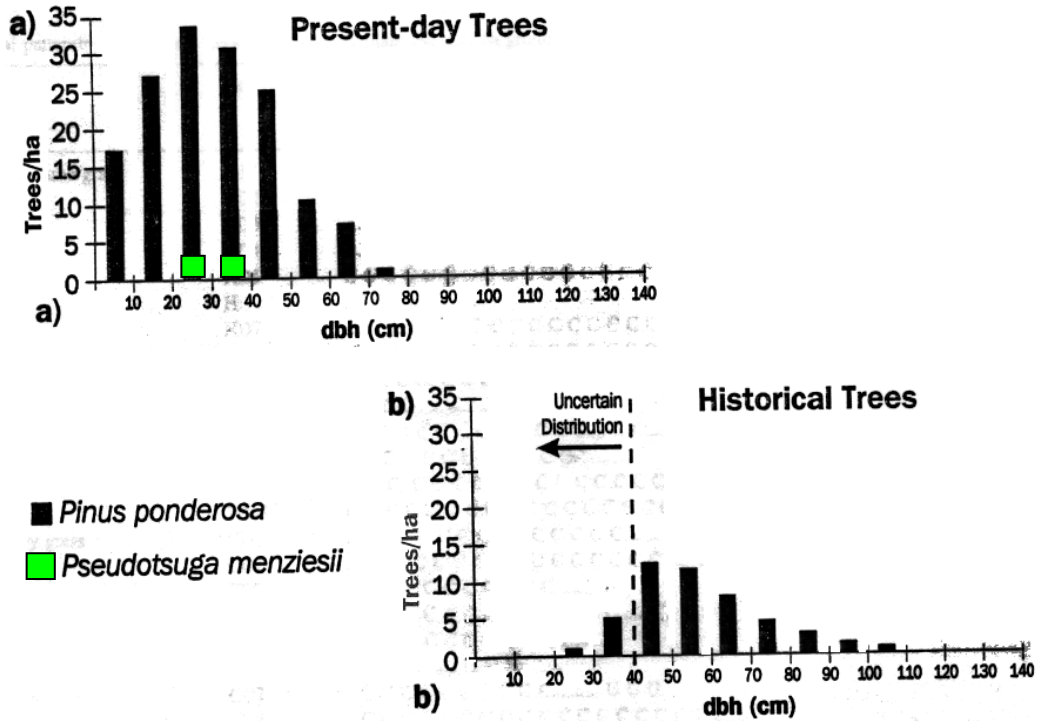


Fig. 3. Diameter distributions of (a) present-day, and (b) historical trees for four plots in the PIPO/PUTR/AGSP association.

